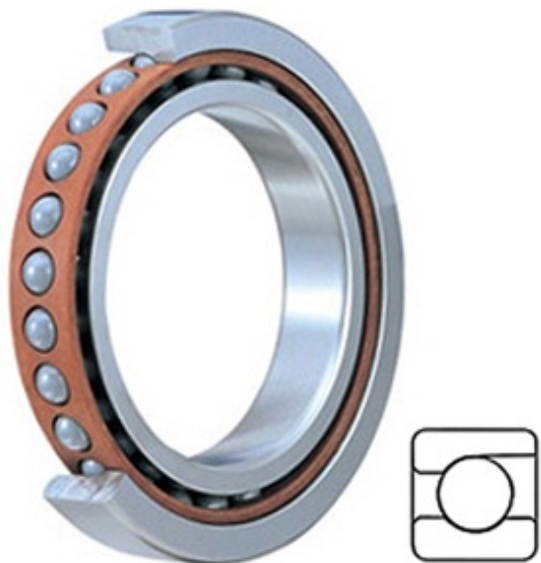




# BEARING CORP.OF AMERICA



2MM203WI Bearing 2D drawings and 3D CAD models

0.669 Inch | 17 Millimeter x 1.575 Inch | 40 Millimeter x 0.472 Inch | 12 Millimeter timken 2MM203WI Fafnir® Spindle Angular Contact Ball Bearings (9300WI, 9100WI, 200WI, 300WI)

Bearing No. 2MM203WI

Category	Precision Ball Bearings
Inventory	0.0
Manufacturer Name	TIMKEN
Minimum Buy Quantity	N/A
Weight	0.064
EAN	0087796070028
Product Group	B04270
Enclosure	Open
Precision Class	ABEC 7   ISO P4
Material - Ball	Steel
Number of Bearings	1 (Single)
Contact Angle	15 Degree
Preload	None
Raceway Style	1 Rib Outer Ring
Cage Material	Phenolic
Rolling Element	Ball Bearing
Flush Ground	No
Inch - Metric	Metric
Other Features	Single Row   Angular Contact   Super High Precision
Long Description	17MM Bore; 40MM Outside Diameter; 12MM Width; Open Enclosure; ABEC 7   ISO P4 Precision; Steel Ball Material; 1



## BEARING CORP.OF AMERICA

	(Single) Bearings; 15 Degree Contact Angle; Phenolic Cage Material; 1 Rib Outer Ring Rac
Category	Precision Ball Bearings
UNSPSC	31171531
Harmonized Tariff Code	8482.10.50.28
Noun	Bearing
Keyword String	Angular Contact Ball
Manufacturer URL	<a href="http://www.timken.com">http://www.timken.com</a>
Manufacturer Item Number	2MM203WI
Weight / LBS	0.141
B	0.472 Inch   12 Millimeter
d	0.669 Inch   17 Millimeter
D	1.575 Inch   40 Millimeter
d - Bore	17 mm
D - Outer Diameter	40 mm
Bearing Width	12 mm
do - Ball Diameter	6.747002 mm
C0 - Static Radial Rating	5900 N
Ce - Dynamic Radial Rating <sup>1</sup>	12000 N
Limiting Speed (Grease)	41900 rpm
Limiting Speed (Oil)	83800 rpm
Ball Type	STEEL
Cage Type	CR - Phenolic Outer Land Riding Cage
Bearing Weight	0.064 Kg
Design Units	METRIC
Full Timken Part Number	2MM203WICR
R - Inner Ring To Clear Radius <sup>2</sup>	0.6 mm
r - Outer Ring To Clear Radius <sup>3</sup>	0.6 mm



## BEARING CORP.OF AMERICA

da - Inner Ring Backing Diameter	21.500 mm
Da - Outer Ring Backing Diameter	35.700 mm