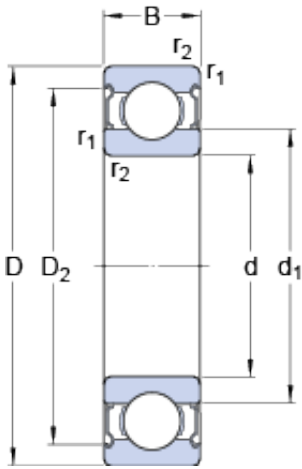




BEARING CORP.OF AMERICA



90 mm x 160 mm x 30 mm skf 6218-2Z Deep groove ball bearings

Bearing No. 6218-2Z

6218-2Z Bearing 2D drawings and 3D CAD models

Size	160x90x30 mm
Bore Diameter	160 mm
Outer Diameter	90 mm
Width	30 mm
d	90 mm
D	160 mm
B	30 mm
d ₁	112.5 mm
D ₂	142.6 mm
r _{1,2} - min.	2 mm
d _a - min.	101 mm
d _a - max.	112 mm
D _a - max.	149 mm
r _a - max.	2 mm
Basic dynamic load rating - C	101 kN
Basic static load rating - C ₀	73.5 kN
Fatigue load limit - P _u	2.8 kN
Reference speed	8500 r/min
Limiting speed	4300 r/min
Calculation factor - k _r	0.025
Calculation factor - f ₀	14.7
Category	Single Row Ball Bearings
Inventory	0.0
Manufacturer Name	SKF



BEARING CORP.OF AMERICA

Minimum Buy Quantity	N/A
Weight / Kilogram	2.266
Product Group	B00308
Enclosure	2 Metal Shields
Precision Class	ABEC 1 ISO P0
Maximum Capacity / Filling Slot	No
Rolling Element	Ball Bearing
Snap Ring	No
Internal Special Features	No
Cage Material	Steel
Internal Clearance	C0-Medium
Inch - Metric	Metric
Long Description	90MM Bore; 160MM Outside Diameter; 30MM Outer Race Width; 2 Metal Shields; Ball Bearing; ABEC 1 ISO P0; No Filling Slot; No Snap Ring; No Internal Special Features; C0-Medium Internal Clearance; Ste
Other Features	Deep Groove
Category	Single Row Ball Bearing
UNSPSC	31171504
Harmonized Tariff Code	8482.10.50.68
Noun	Bearing
Keyword String	Ball
Manufacturer URL	http://www.skf.com
Weight / LBS	5.0785
Outside Diameter	6.299 Inch 160 Millimeter
Inner Race Width	0 Inch 0 Millimeter
Bore	3.543 Inch 90 Millimeter
Outer Race Width	1.181 Inch 30 Millimeter
d ₁	112.5 mm



BEARING CORP.OF AMERICA

D_2	142.6 mm
$r_{1,2}$ min.	2 mm
d_a min.	101 mm
d_a max.	112 mm
D_a max.	149 mm
r_a max.	2 mm
Basic dynamic load rating C	101 kN
Basic static load rating C_0	73.5 kN
Fatigue load limit P_u	2.8 kN
Calculation factor k_r	0.025
Calculation factor f_0	14.7
Mass bearing	2.3 kg