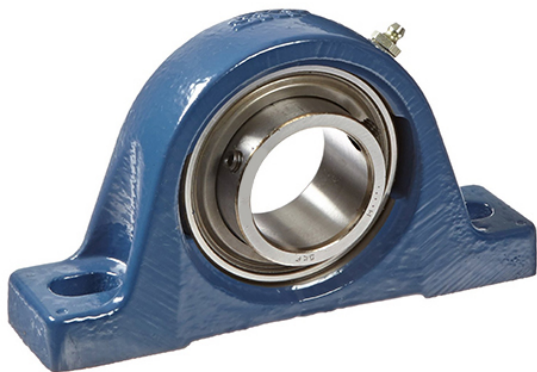




BEARING CORP.OF AMERICA



2.2500 in x 190.5 mm x 2-9/16 in skf P2B
204-TF Ball bearing plummer block units

Bearing No. P2B 204-TF

mounting:	Two-Bolt Base
B	2-9/16 in
d	2.2500 in
radial dynamic load capacity:	11860 lbf
bore type:	Round
radial static load capacity:	8100 lbf
base to bore centerline:	2.7520 in
base width:	60 mm
housing material:	Cast Iron
D	190.5 mm
locking device:	Set Screw
maximum rpm:	3400 RPM
expansion type:	Non-Expansion Bearing (Fixed)
lubrication type:	Lubrication Fitting
overall length:	240 mm
series:	SY
overall height:	139.5 mm
replacement bearing:	YAR 212-204-2F
finish/coating:	Uncoated
standards met:	ISO

P2B 204-TF Bearing 2D drawings and 3D CAD models